

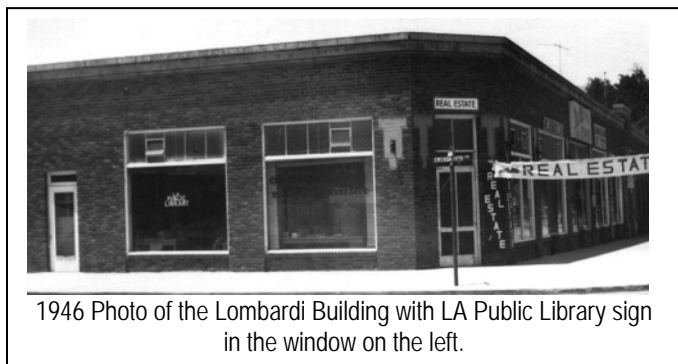
CHATSWORTH PAST & PRESENT

By Ann Vincent

November 2009

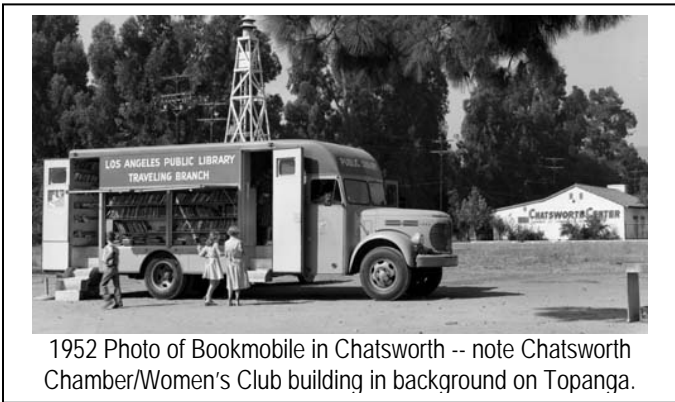
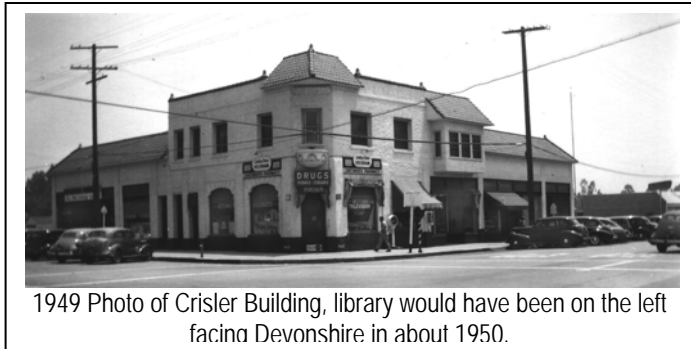
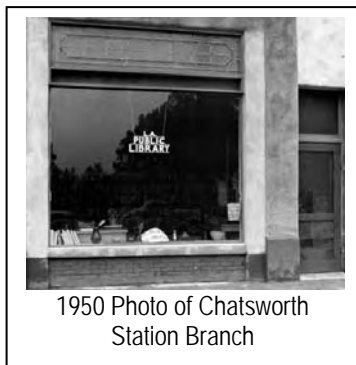
One of our newest buildings, the Chatsworth Branch of the Los Angeles Public Library at 21052 Devonshire, has an interesting history.

Chatsworth Historical Society founding member, Lila Schepler, recalls the first library in the Wilkins building on the southeast corner of Owensmouth and Devonshire. It later moved across the street, to the Lombardi Building at the southwest corner, on Owensmouth. The Lombardi building was a brick structure that housed a variety of business through the years, including an Auto Parts, Feed Store and a 5 & 10 cent store. Both buildings have since been demolished. The photo below shows that this early branch existed in one of the Lombardi storefronts in 1946.



This same LA PUBLIC LIBRARY sign is later found in the 1950 photo shown below provided by the LA Public Library archives and listed as the Chatsworth Station Branch. This photo is clearly a different storefront,

which is in the Crisler Building, once located on the southeast corner of Devonshire and Topanga. The features above the windows correspond to that building at that time. The location was on Devonshire, before the hardware store moved to that section of the building.

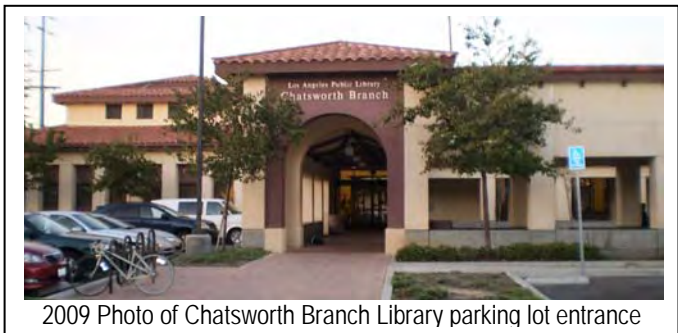


From 1952-1963 the Chatsworth community was serviced by the LA Public Library Bookmobile Program. The bookmobile made scheduled stops throughout the valley, stopping here across the street from the Chatsworth Park Elementary School.



In 1957, land was purchased and a new branch library was built at 21052 Devonshire, opening on May 22, 1963. The Friends of the Library book sales were held regularly on the front lawn of the library, weather permitting.

In 1998 funds were approved for adjacent land and an expanded building on the existing site. In June 2002, ground breaking began for the new building, while a temporary library was opened at the Chatsworth Train Station that housed a small portion of books allowing local patrons easy access to the LA City library system.



On November 15, 2004, a beautiful building designed specifically for Chatsworth was re-opened with Bruce Seidman continuing as the Head Librarian. Special features at our library include a stained glass window, book art and children's murals. State of the art computer access and a multimedia collection of over 42,000 items are on site. Come on by, it's your library ... check it out!